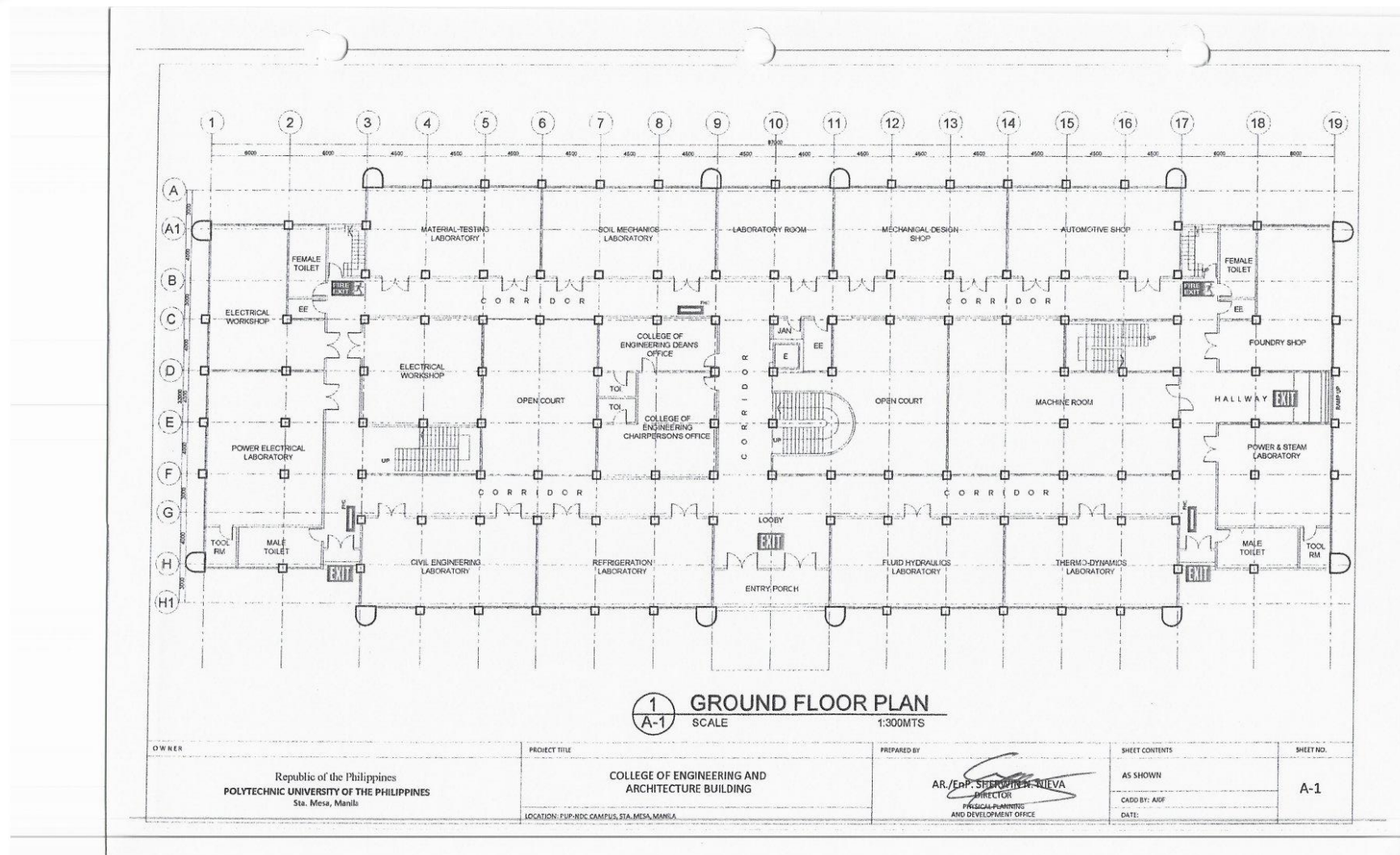




**POLYTECHNIC UNIVERSITY OF THE PHILIPPINES
COLLEGE OF ENGINEERING
COMPUTER ENGINEERING DEPARTMENT**

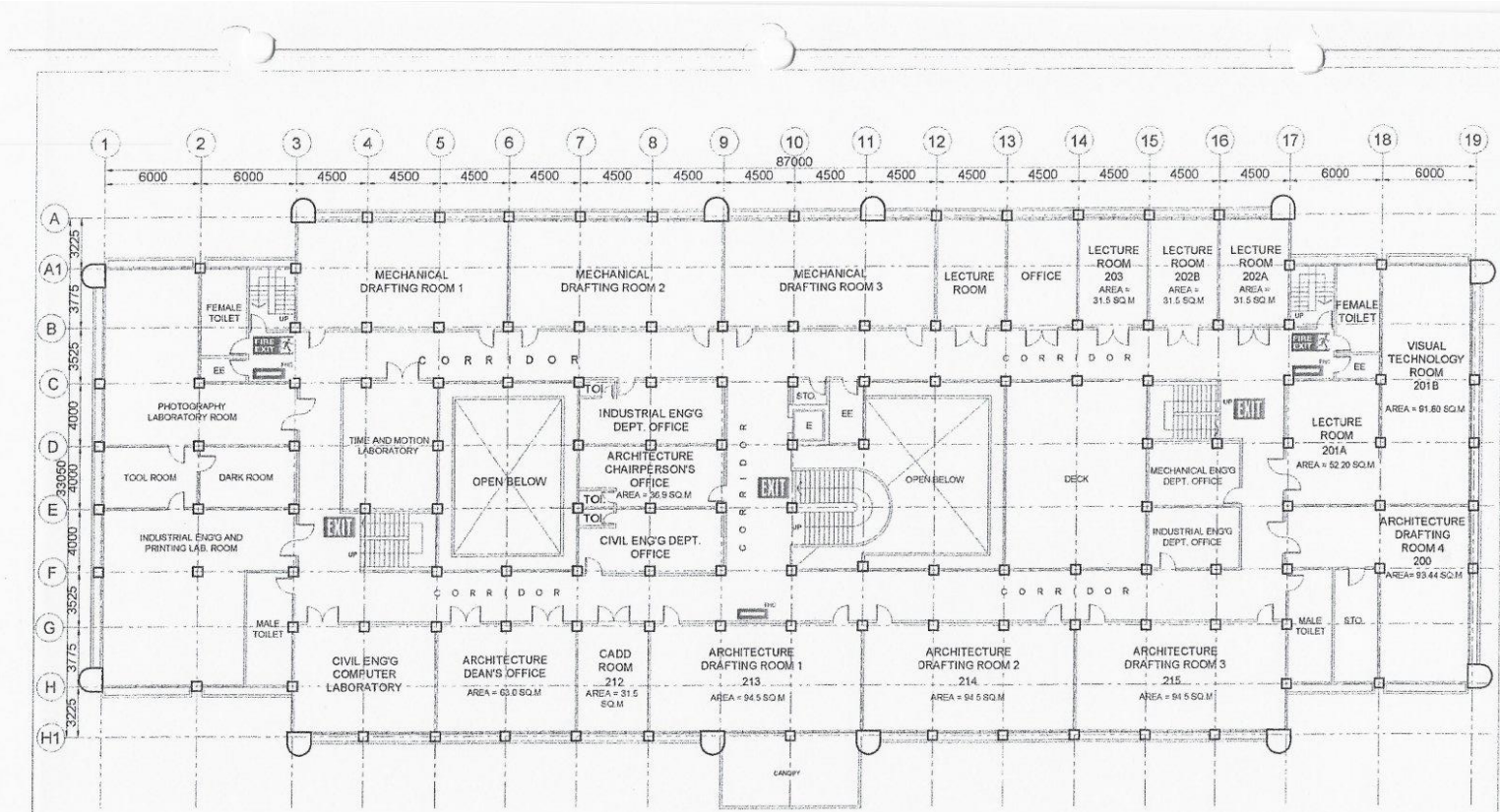


(02) 8713 5968 | dcoe_chair@gmail.com
RM322 CEA BLDG. NDC COMPOUND,
ANONAS COR. PUREZA STREETS, STA. MESA, MANILA





POLYTECHNIC UNIVERSITY OF THE PHILIPPINES
COLLEGE OF ENGINEERING
COMPUTER ENGINEERING DEPARTMENT



1 SECOND FLOOR PLAN
 SCALE 1:300MTS

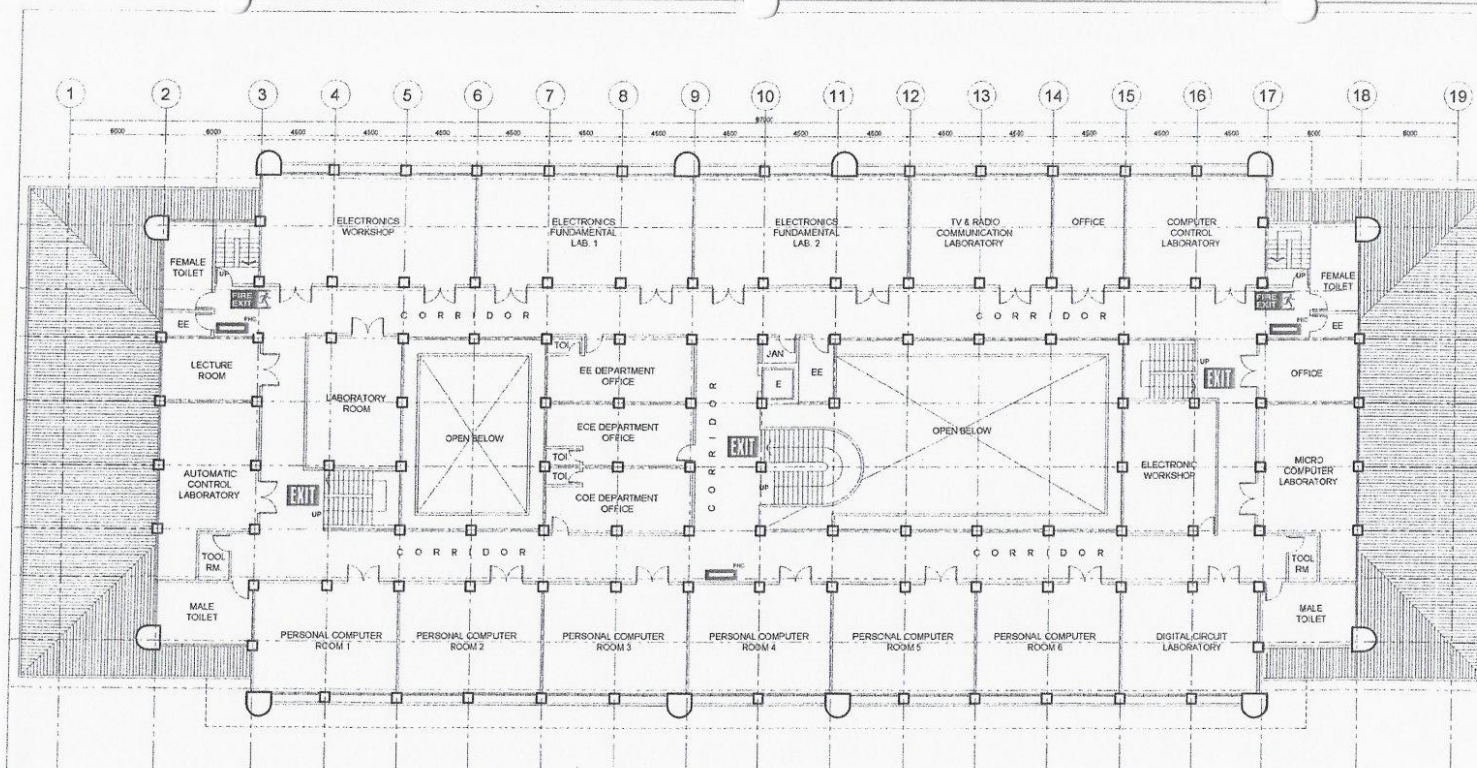
OWNER Republic of the Philippines POLYTECHNIC UNIVERSITY OF THE PHILIPPINES Sta. Mesa, Manila	PROJECT TITLE COLLEGE OF ENGINEERING AND ARCHITECTURE BUILDING LOCATION: PUP-NDC CAMPUS, STA. MESA, MANILA	PREPARED BY AR/ENP SHERWIN D. NIEVA DIRECTOR PHYSICAL PLANNING AND DEVELOPMENT OFFICE	SHEET CONTENTS AS SHOWN CADD BY: ADF DATE:	SHEET NO. A-2
--	--	--	---	------------------

(02) 8713 5968 | dcoe_chair@gmail.com
 RM322 CEA BLDG. NDC COMPOUND,
 ANONAS COR. PUREZA STREETS, STA. MESA, MANILA





**POLYTECHNIC UNIVERSITY OF THE PHILIPPINES
COLLEGE OF ENGINEERING
COMPUTER ENGINEERING DEPARTMENT**



1
A-3 **THIRD FLOOR PLAN**
SCALE 1:300M/T

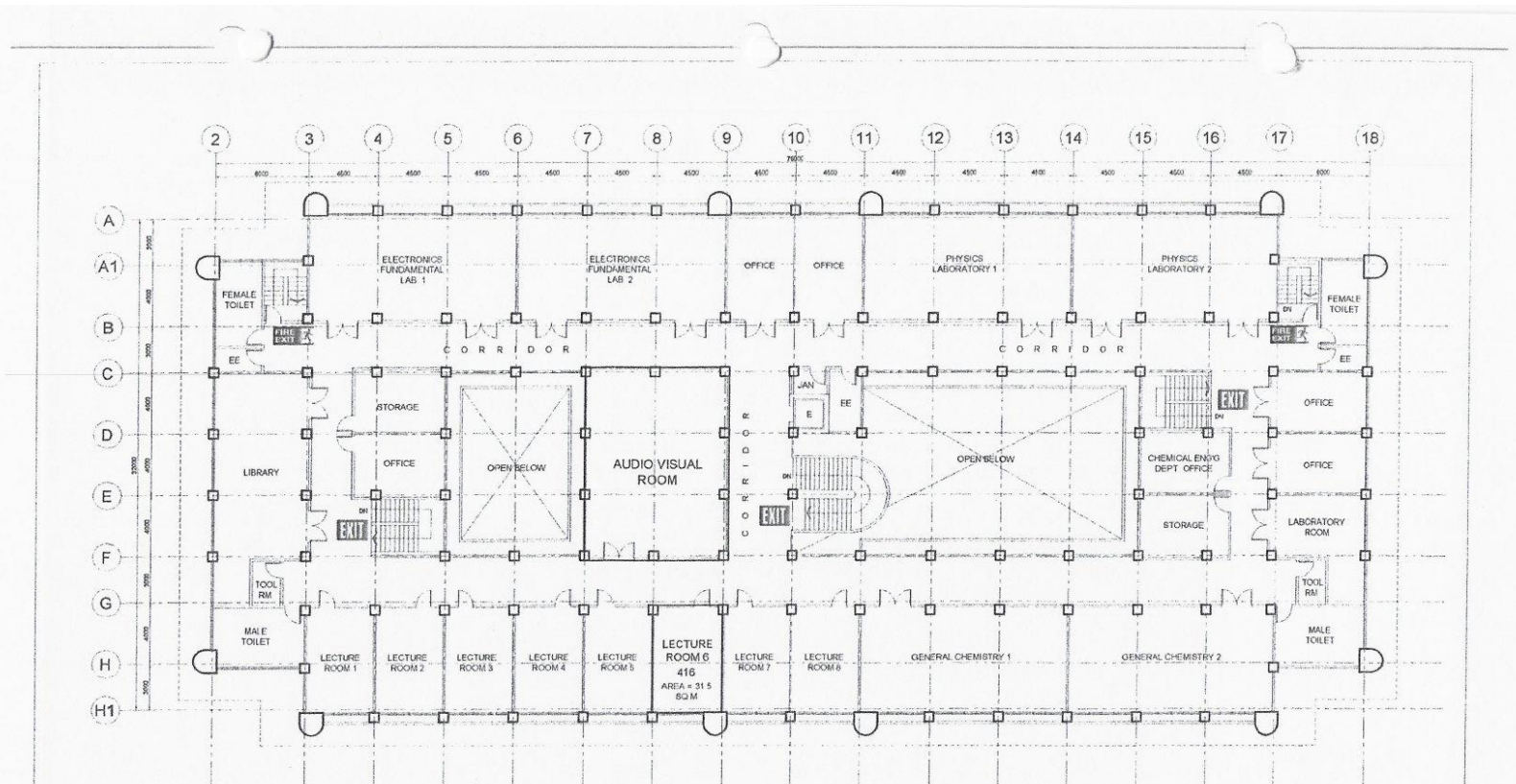
OWNER Republic of the Philippines POLYTECHNIC UNIVERSITY OF THE PHILIPPINES Sta. Mesa, Manila	PROJECT TITLE COLLEGE OF ENGINEERING AND ARCHITECTURE BUILDING LOCATION: PUP-NDC CAMPUS, STA. MESA, MANILA	PREPARED BY AR/ENP. SHERWIN N. NIVIA DIRECTOR PHYSICAL PLANNING AND DEVELOPMENT OFFICE	SHEET CONTENTS AS SHOWN CADD BY: ADF DATE:	SHEET NO. A-3
--	--	---	---	------------------

(02) 8713 5968 | dcoe_chair@gmail.com
RM322 CEA BLDG. NDC COMPOUND,
ANONAS COR. PUREZA STREETS, STA. MESA, MANILA





**POLYTECHNIC UNIVERSITY OF THE PHILIPPINES
COLLEGE OF ENGINEERING
COMPUTER ENGINEERING DEPARTMENT**



1
A-4 **FOURTH FLOOR PLAN**
SCALE 1:300MTS

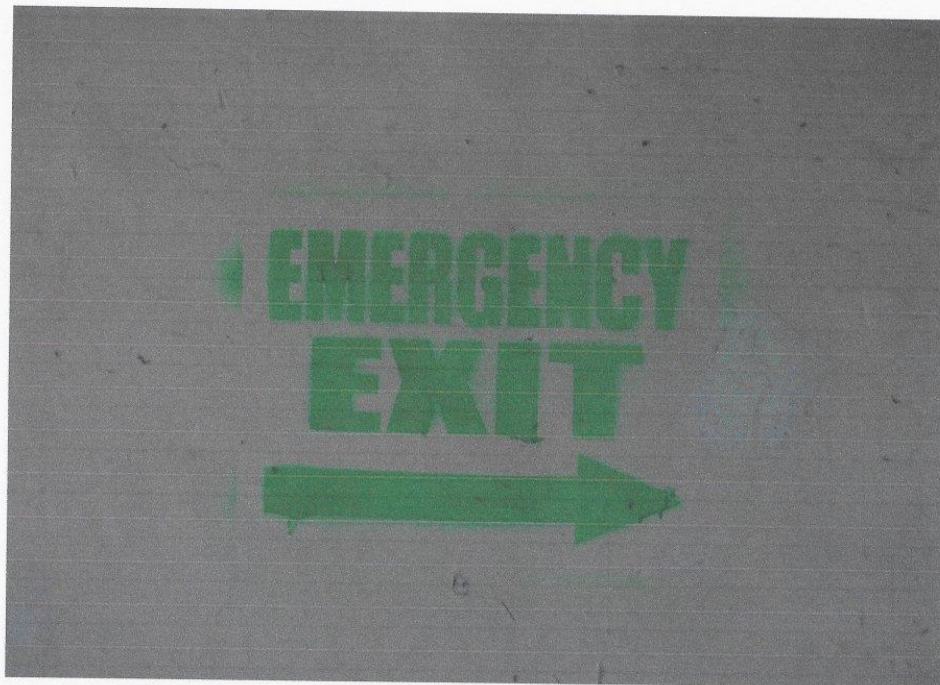
OWNER Republic of the Philippines POLYTECHNIC UNIVERSITY OF THE PHILIPPINES Sta. Mesa, Manila	PROJECT TITLE COLLEGE OF ENGINEERING AND ARCHITECTURE BUILDING LOCATION: PUP-NDC CAMPUS, STA. MESA, MANILA	PREPARED BY AR./ENR. SHERWIN M. NIEVA DIRECTOR PLANNING AND DEVELOPMENT OFFICE	SHEET CONTENTS AS SHOWN CADD BY: ARS DATE:	SHEET NO. A-4
--	---	---	---	------------------

(02) 8713 5968 | dcoe_chair@gmail.com
RM322 CEA BLDG. NDC COMPOUND,
ANONAS COR. PUREZA STREETS, STA. MESA, MANILA





POLYTECHNIC UNIVERSITY OF THE PHILIPPINES
COLLEGE OF ENGINEERING
COMPUTER ENGINEERING DEPARTMENT



EMERGENCY EXIT SIGNAGE AT MAIN BUILDING



EMERGENCY EXIT AT MAIN BUILDING



POLYTECHNIC UNIVERSITY OF THE PHILIPPINES
COLLEGE OF ENGINEERING
COMPUTER ENGINEERING DEPARTMENT



**EMERGENCY EXIT SIGNAGE AT
COLLEGE OF ENGINEERING AND ARCHITECTURE BUILDING**



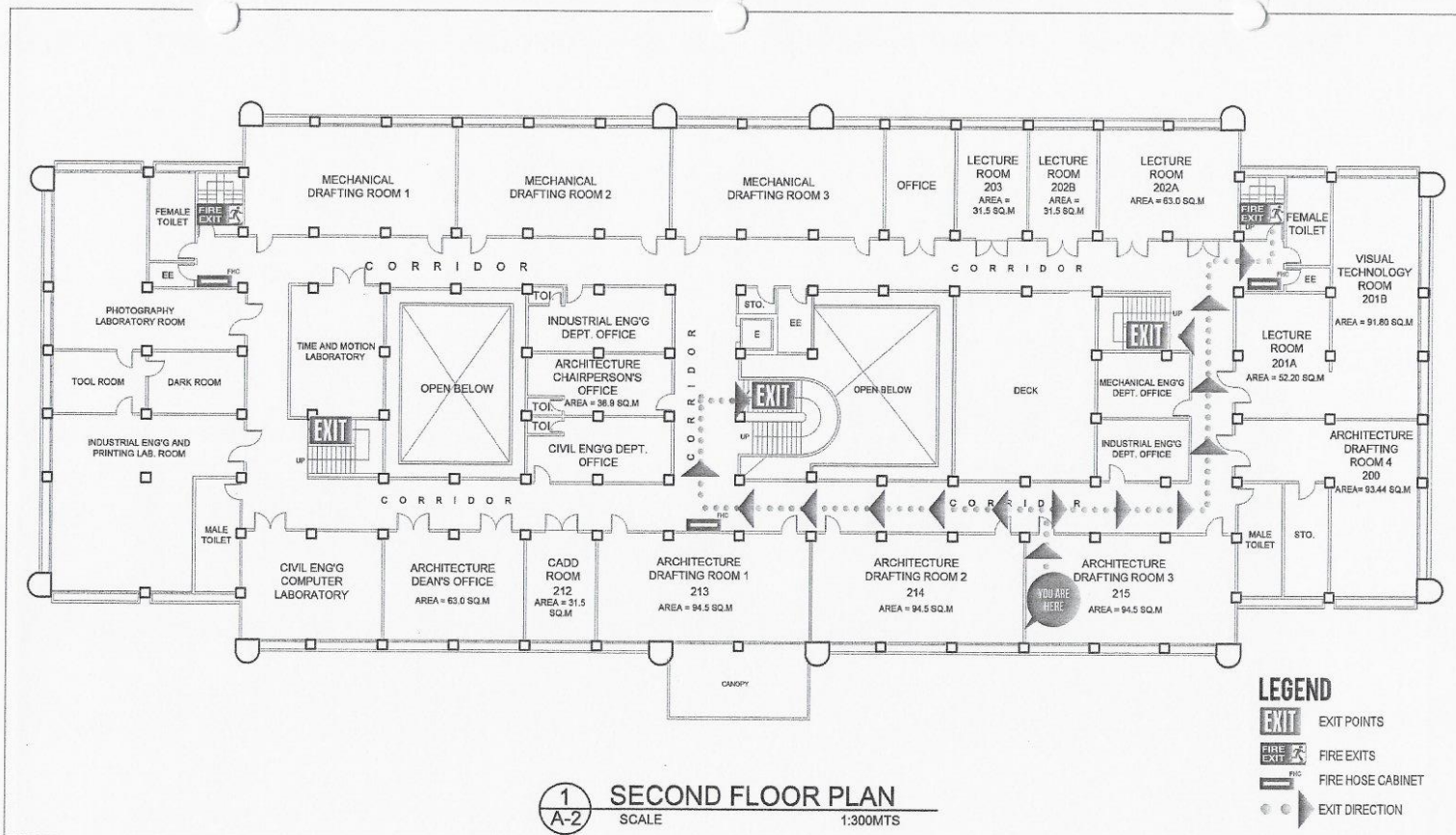
POLYTECHNIC UNIVERSITY OF THE PHILIPPINES
COLLEGE OF ENGINEERING
COMPUTER ENGINEERING DEPARTMENT



**EMERGENCY EXIT SIGNAGE AT
COLLEGE OF ENGINEERING AND ARCHITECTURE BUILDING**



**POLYTECHNIC UNIVERSITY OF THE PHILIPPINES
COLLEGE OF ENGINEERING
COMPUTER ENGINEERING DEPARTMENT**



1 SECOND FLOOR PLAN
A-2 SCALE 1:300MTS

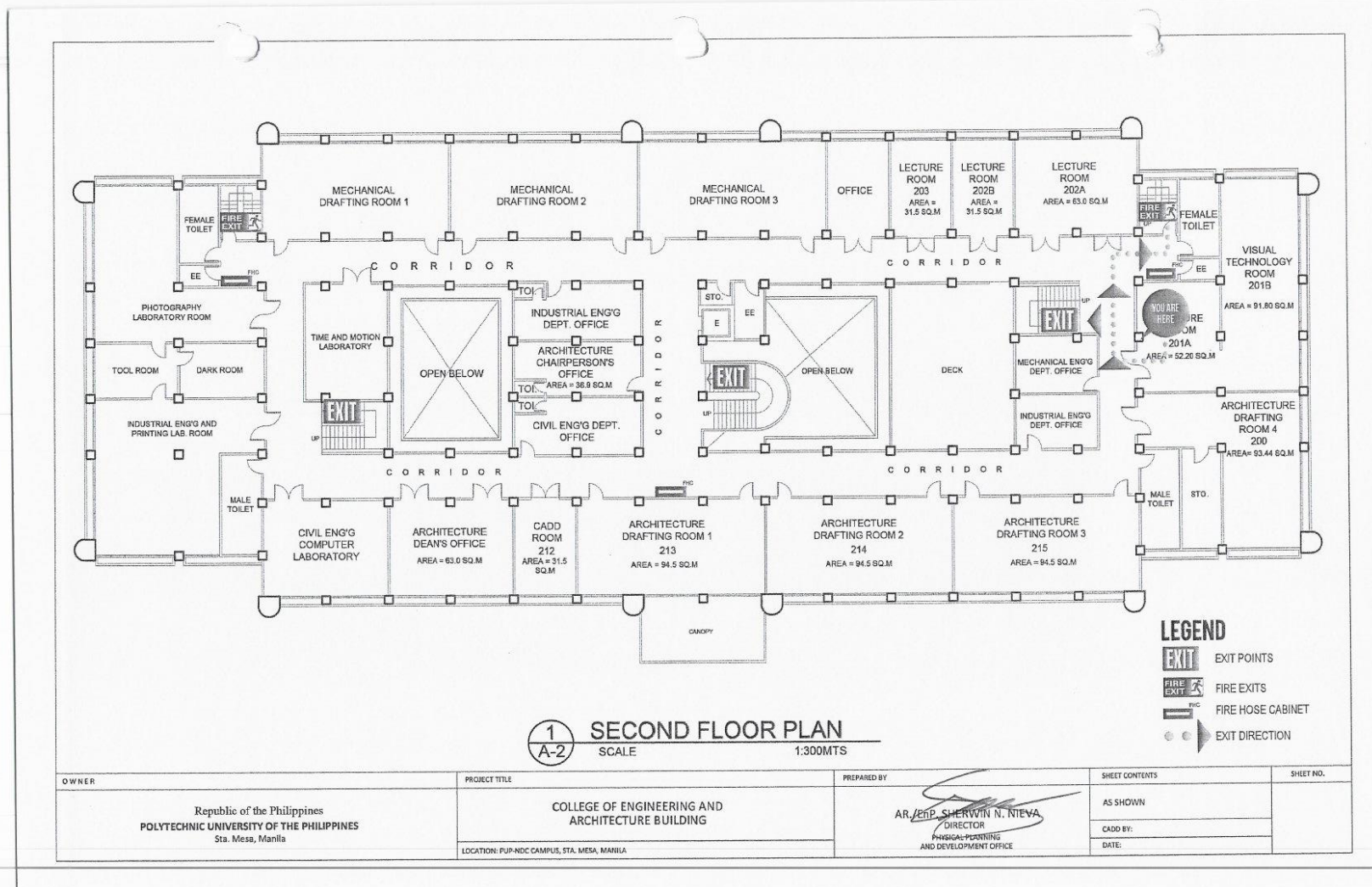
OWNER	PROJECT TITLE	PREPARED BY	SHEET CONTENTS	SHEET NO.
Republic of the Philippines POLYTECHNIC UNIVERSITY OF THE PHILIPPINES Sta. Mesa, Manila	COLLEGE OF ENGINEERING AND ARCHITECTURE BUILDING <small>LOCATION: PUP-NDC CAMPUS, STA. MESA, MANILA</small>	AR./ENR. SHERWIN N. NIEVA DIRECTOR PHYSICAL PLANNING AND DEVELOPMENT OFFICE	AS SHOWN CADD BY: DATE:	

(02) 8713 5968 | dcoe_chair@gmail.com
RM322 CEA BLDG. NDC COMPOUND,
ANONAS COR. PUREZA STREETS, STA. MESA, MANILA





**POLYTECHNIC UNIVERSITY OF THE PHILIPPINES
COLLEGE OF ENGINEERING
COMPUTER ENGINEERING DEPARTMENT**

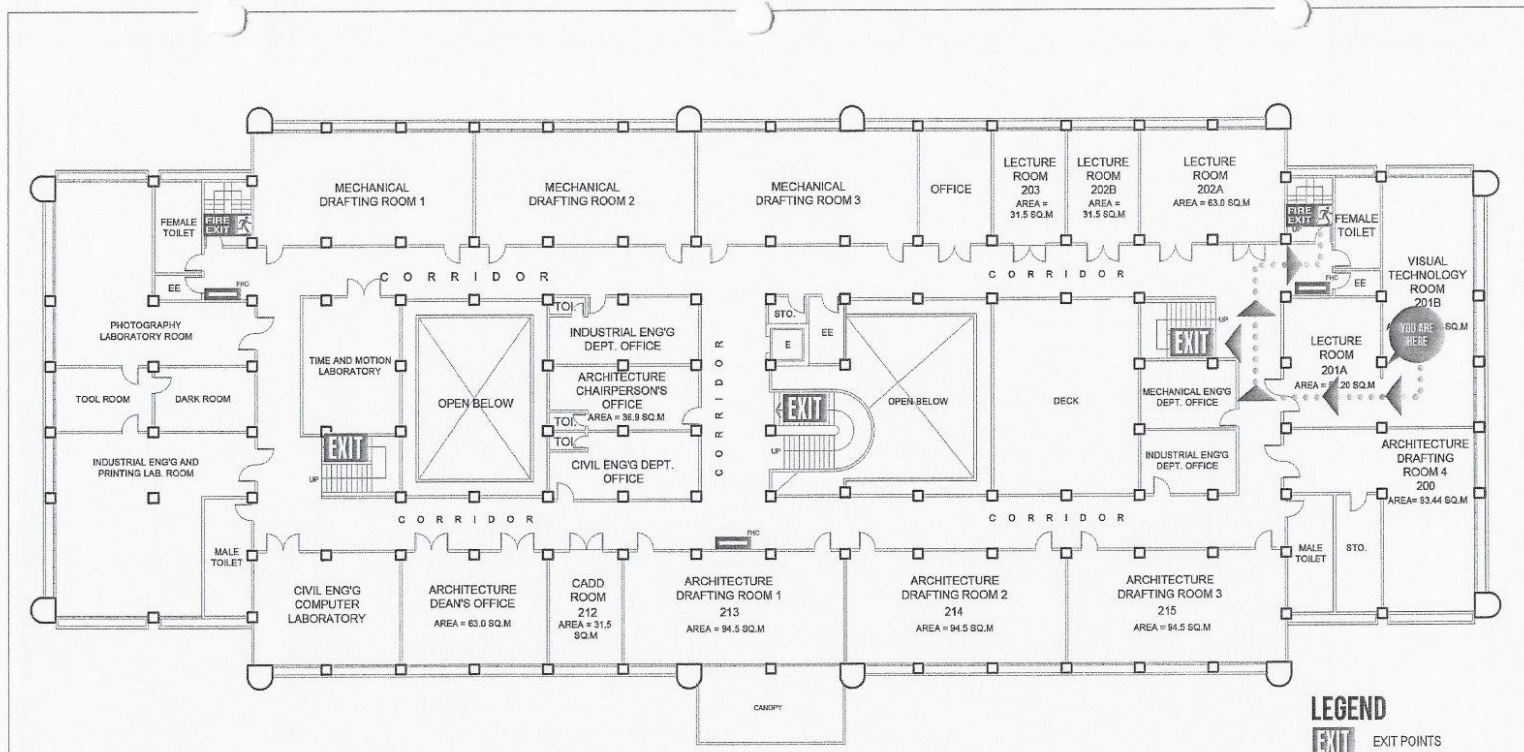


(02) 8713 5968 | dcoe_chair@gmail.com
RM322 CEA BLDG. NDC COMPOUND,
ANONAS COR. PUREZA STREETS, STA. MESA, MANILA





**POLYTECHNIC UNIVERSITY OF THE PHILIPPINES
COLLEGE OF ENGINEERING
COMPUTER ENGINEERING DEPARTMENT**



1 SECOND FLOOR PLAN
A-2 SCALE 1:300M

LEGEND

- EXIT POINTS
- FIRE EXITS
- FIRE HOSE CABINET
- EXIT DIRECTION

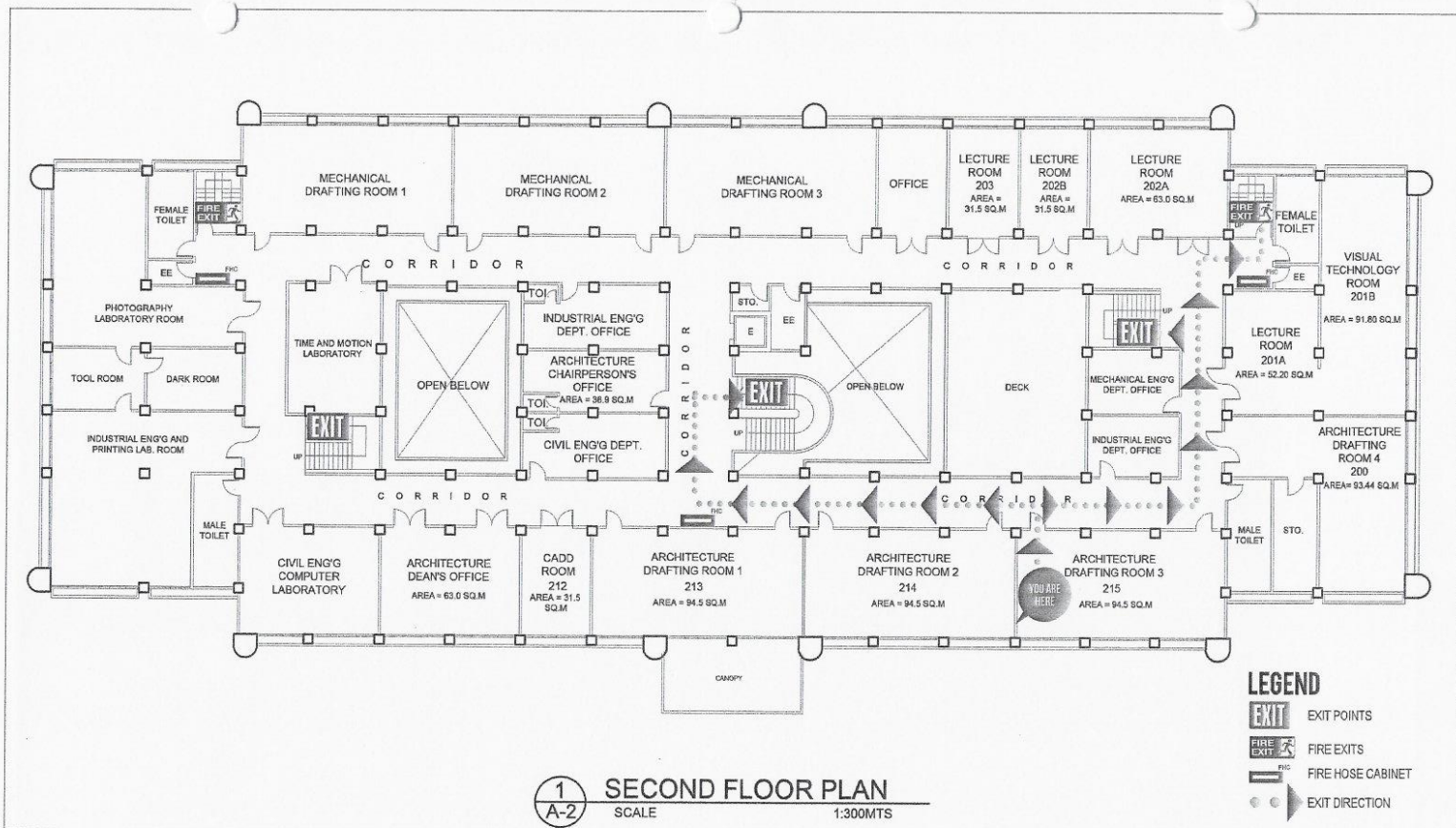
OWNER	PROJECT TITLE	PREPARED BY	SHEET CONTENTS	SHEET NO.
Republic of the Philippines POLYTECHNIC UNIVERSITY OF THE PHILIPPINES Sta. Mesa, Manila	COLLEGE OF ENGINEERING AND ARCHITECTURE BUILDING LOCATION: PUP-NDC CAMPUS, STA. MESA, MANILA	AR./ENP. <i>SHERWIN N. NIEVA</i> DIRECTOR PHYSICAL PLANNING AND DEVELOPMENT OFFICE	AS SHOWN CADD BY: DATE:	

(02) 8713 5968 | dcoe_chair@gmail.com
RM322 CEA BLDG. NDC COMPOUND,
ANONAS COR. PUREZA STREETS, STA. MESA, MANILA





**POLYTECHNIC UNIVERSITY OF THE PHILIPPINES
COLLEGE OF ENGINEERING
COMPUTER ENGINEERING DEPARTMENT**



LEGEND

- EXIT POINTS
- FIRE EXITS
- FIRE HOSE CABINET
- EXIT DIRECTION

1 SECOND FLOOR PLAN
A-2 SCALE 1:300MTS

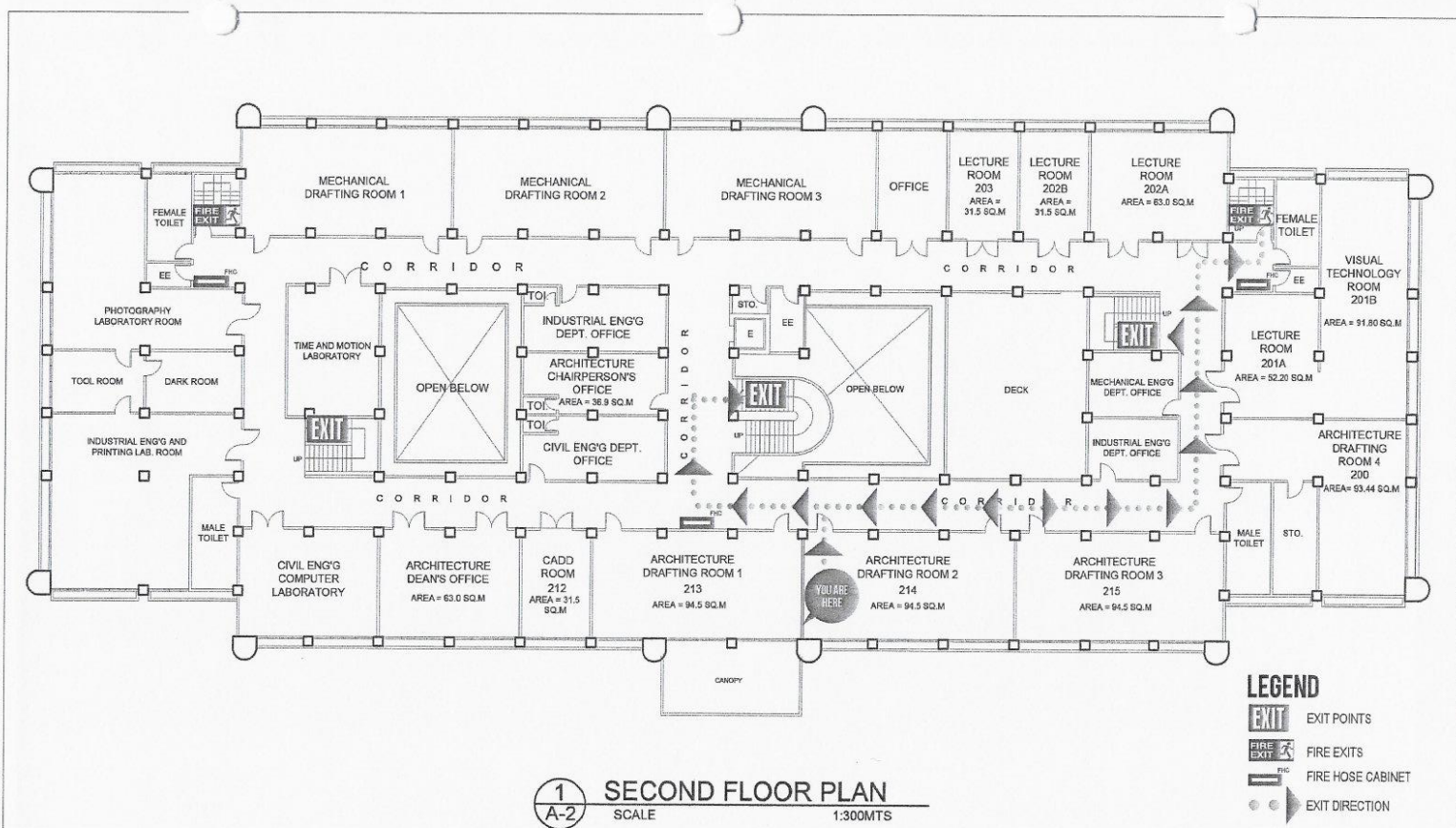
OWNER	PROJECT TITLE	PREPARED BY	SHEET CONTENTS	SHEET NO.
Republic of the Philippines POLYTECHNIC UNIVERSITY OF THE PHILIPPINES Sta. Mesa, Manila	COLLEGE OF ENGINEERING AND ARCHITECTURE BUILDING <small>LOCATION: PUP-NDC CAMPUS, STA. MESA, MANILA</small>	AR./ENR. SHERWIN N. NIEVA DIRECTOR PHYSICAL PLANNING AND DEVELOPMENT OFFICE	AS SHOWN CADD BY: DATE:	

(02) 8713 5968 | dcoe_chair@gmail.com
RM322 CEA BLDG. NDC COMPOUND,
ANONAS COR. PUREZA STREETS, STA. MESA, MANILA





**POLYTECHNIC UNIVERSITY OF THE PHILIPPINES
COLLEGE OF ENGINEERING
COMPUTER ENGINEERING DEPARTMENT**



1
A-2 **SECOND FLOOR PLAN**
SCALE 1:300M/T

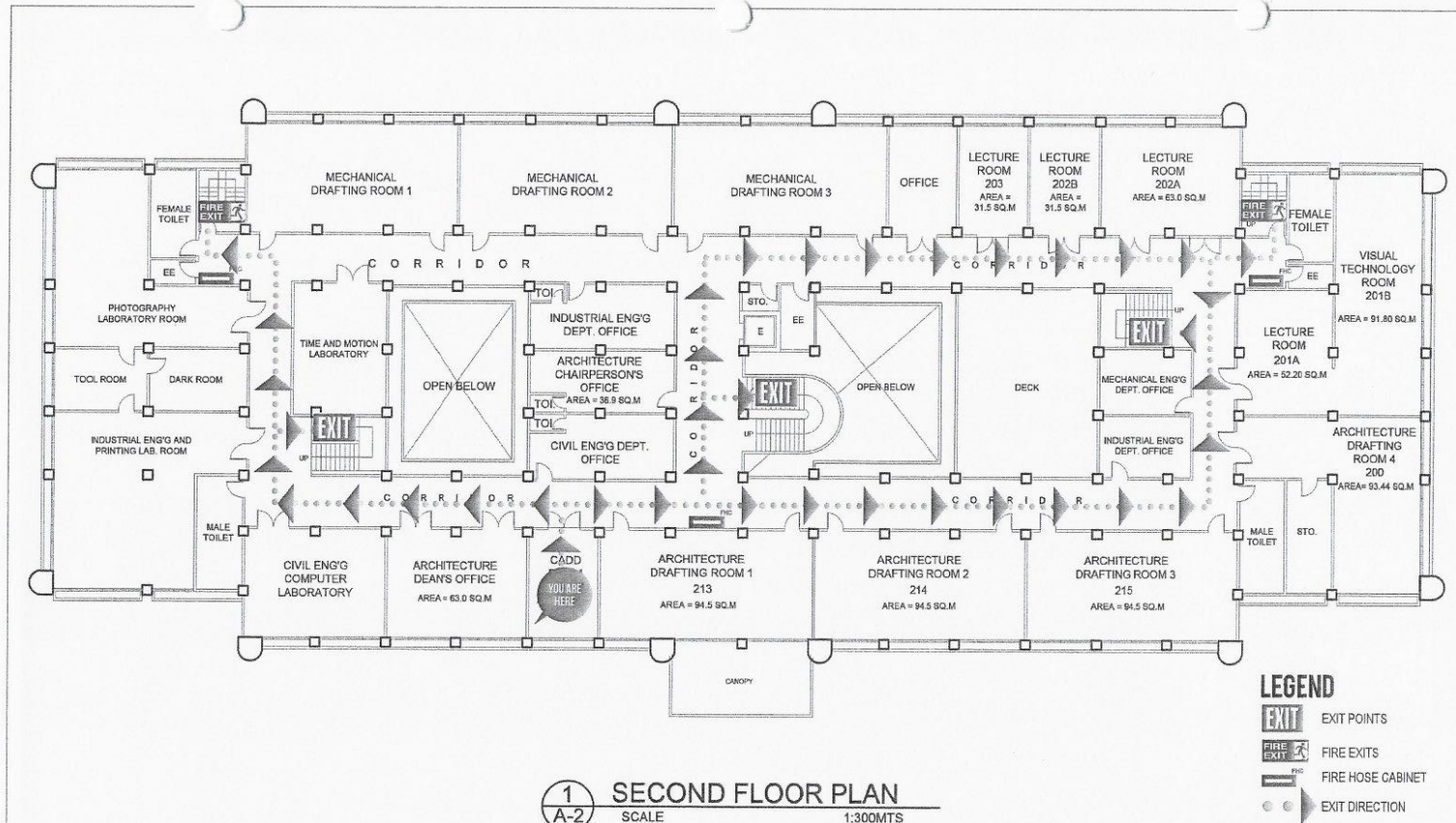
OWNER	PROJECT TITLE	PREPARED BY	SHEET CONTENTS	SHEET NO.
Republic of the Philippines POLYTECHNIC UNIVERSITY OF THE PHILIPPINES Sta. Mesa, Manila	COLLEGE OF ENGINEERING AND ARCHITECTURE BUILDING <small>LOCATION: PUP-NDC CAMPUS, STA. MESA, MANILA</small>	AR./ENR. SHERWIN N. NIEVA DIRECTOR PHYSICAL PLANNING AND DEVELOPMENT OFFICE	AS SHOWN CADD BY: DATE:	

(02) 8713 5968 | dcoe_chair@gmail.com
RM322 CEA BLDG. NDC COMPOUND,
ANONAS COR. PUREZA STREETS, STA. MESA, MANILA





POLYTECHNIC UNIVERSITY OF THE PHILIPPINES
COLLEGE OF ENGINEERING
COMPUTER ENGINEERING DEPARTMENT



1
A-2 **SECOND FLOOR PLAN**
 SCALE 1:300M/T

LEGEND

- EXIT POINTS
- FIRE EXITS
- FIRE HOSE CABINET
- EXIT DIRECTION

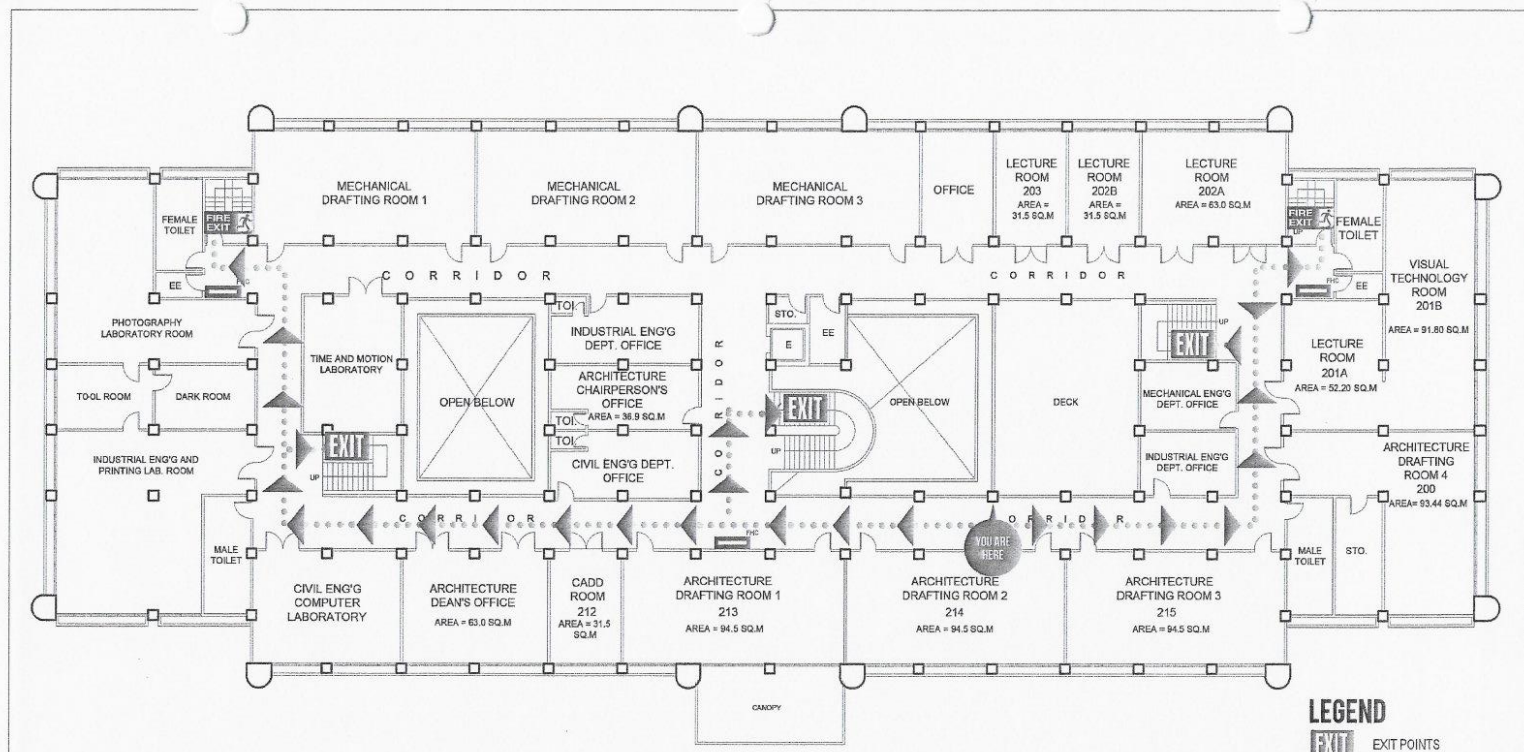
OWNER Republic of the Philippines POLYTECHNIC UNIVERSITY OF THE PHILIPPINES Sta. Mesa, Manila	PROJECT TITLE COLLEGE OF ENGINEERING AND ARCHITECTURE BUILDING	PREPARED BY <i>AR. ERP. SHERWIN NIEVA</i> DIRECTOR PHYSICAL PLANNING AND DEVELOPMENT OFFICE	SHEET CONTENTS AS SHOWN	SHEET NO.
	LOCATION: PUP-NDC CAMPUS, STA. MESA, MANILA		CADD BY: DATE:	

(02) 8713 5968 | dcoe_chair@gmail.com
 RM322 CEA BLDG. NDC COMPOUND,
 ANONAS COR. PUREZA STREETS, STA. MESA, MANILA





**POLYTECHNIC UNIVERSITY OF THE PHILIPPINES
COLLEGE OF ENGINEERING
COMPUTER ENGINEERING DEPARTMENT**



1
A-2 **SECOND FLOOR PLAN**
SCALE 1:300MTS

- LEGEND**
- EXIT POINTS
 - FIRE EXITS
 - FIRE HOSE CABINET
 - EXIT DIRECTION

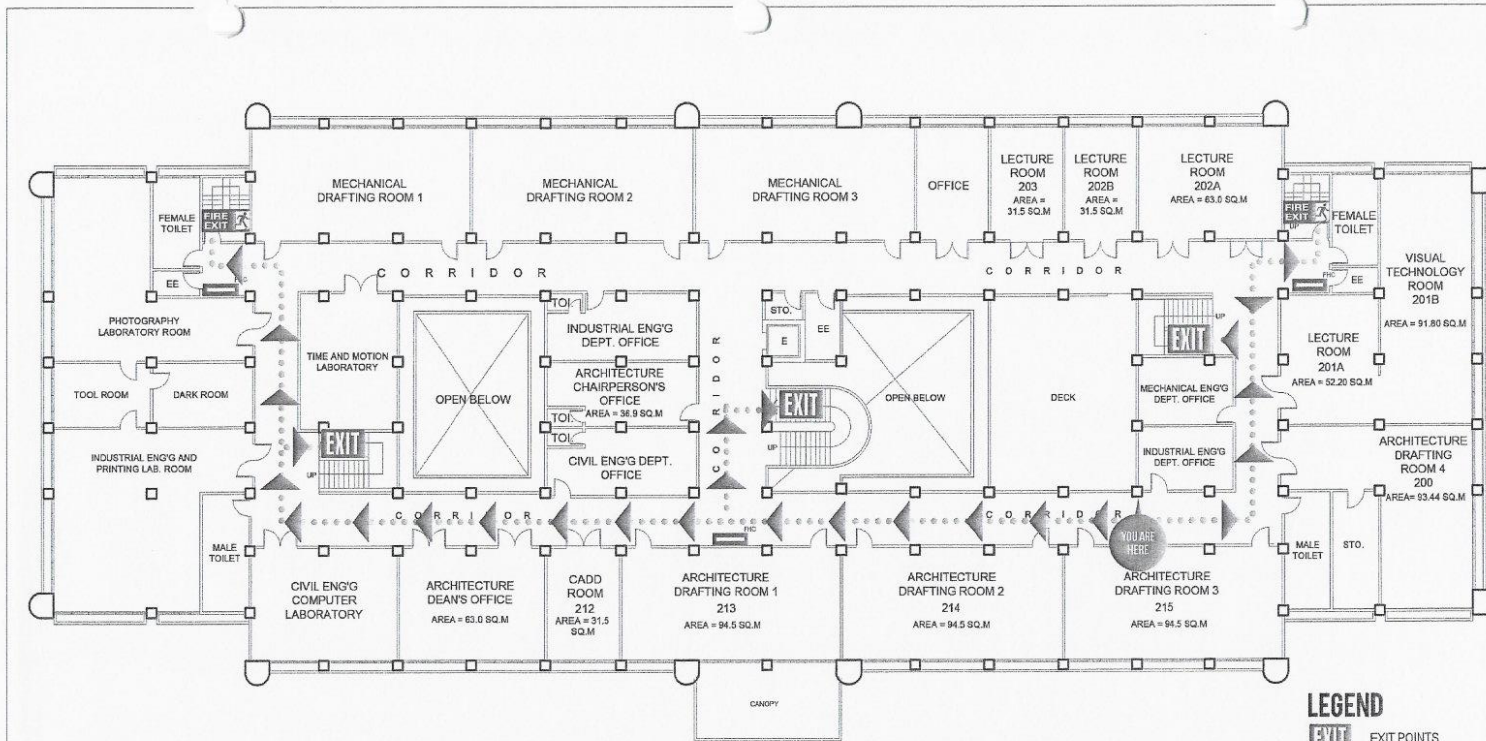
OWNER	PROJECT TITLE	PREPARED BY	SHEET CONTENTS	SHEET NO.
Republic of the Philippines POLYTECHNIC UNIVERSITY OF THE PHILIPPINES Sta. Mesa, Manila	COLLEGE OF ENGINEERING AND ARCHITECTURE BUILDING LOCATION: PUP-NDC CAMPUS, STA. MESA, MANILA	AR./ENP. <i>SHERWIN N. NIEVA</i> DIRECTOR PHYSICAL PLANNING AND DEVELOPMENT OFFICE	AS SHOWN CADD BY: DATE:	

(02) 8713 5968 | dcoe_chair@gmail.com
RM322 CEA BLDG. NDC COMPOUND,
ANONAS COR. PUREZA STREETS, STA. MESA, MANILA





POLYTECHNIC UNIVERSITY OF THE PHILIPPINES
COLLEGE OF ENGINEERING
COMPUTER ENGINEERING DEPARTMENT



LEGEND

- EXIT POINTS
- FIRE EXITS
- FIRE HOSE CABINET
- EXIT DIRECTION

1
A-2 **SECOND FLOOR PLAN**
 SCALE 1:300MTS

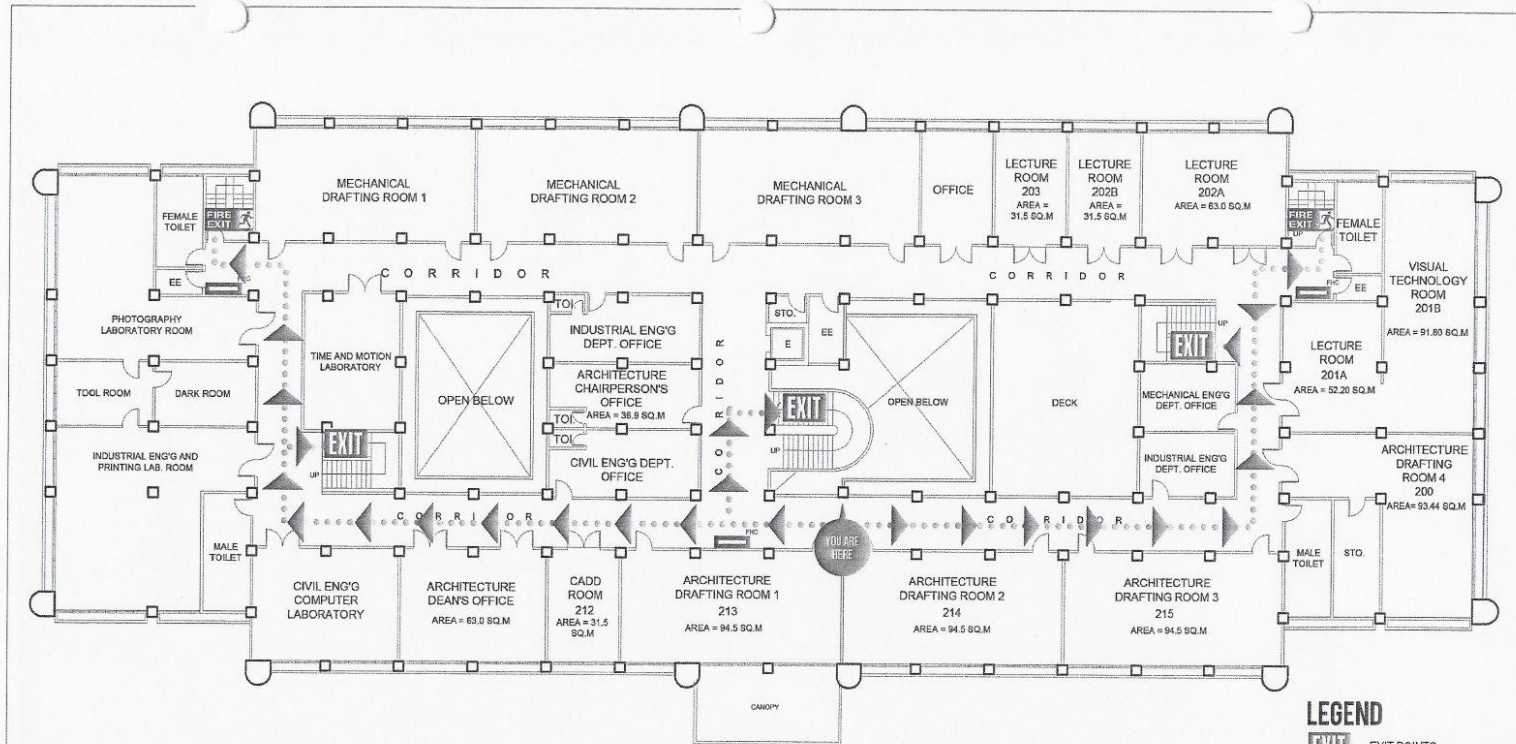
OWNER	PROJECT TITLE	PREPARED BY	SHEET CONTENTS	SHEET NO.
Republic of the Philippines POLYTECHNIC UNIVERSITY OF THE PHILIPPINES Sta. Mesa, Manila	COLLEGE OF ENGINEERING AND ARCHITECTURE BUILDING LOCATION: PUP-NDC CAMPUS, STA. MESA, MANILA	AR. ENP. SHERWIN N. NIEVA DIRECTOR PHYSICAL PLANNING AND DEVELOPMENT OFFICE	AS SHOWN CADD BY: DATE:	

(02) 8713 5968 | dcoe_chair@gmail.com
 RM322 CEA BLDG. NDC COMPOUND,
 ANONAS COR. PUREZA STREETS, STA. MESA, MANILA





**POLYTECHNIC UNIVERSITY OF THE PHILIPPINES
COLLEGE OF ENGINEERING
COMPUTER ENGINEERING DEPARTMENT**



LEGEND

- EXIT POINTS
- FIRE EXITS
- FIRE HOSE CABINET
- EXIT DIRECTION

1 SECOND FLOOR PLAN
A-2 SCALE 1:300M/T

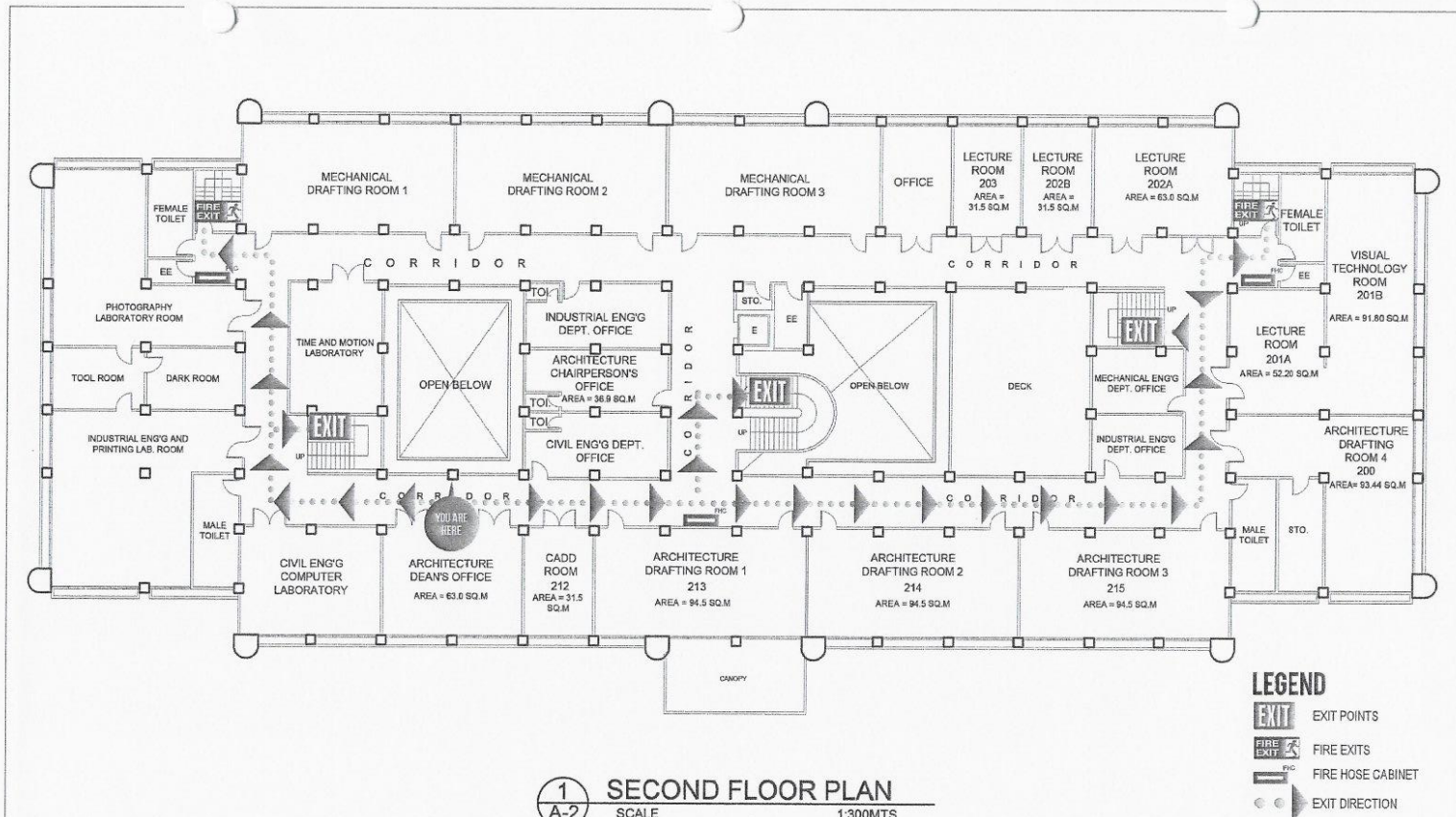
OWNER	PROJECT TITLE	PREPARED BY	SHEET CONTENTS	SHEET NO.
Republic of the Philippines POLYTECHNIC UNIVERSITY OF THE PHILIPPINES Sta. Mesa, Manila	COLLEGE OF ENGINEERING AND ARCHITECTURE BUILDING	ARLEN P. SHERWIN N. NIEVA DIRECTOR PHYSICAL PLANNING AND DEVELOPMENT OFFICE	AS SHOWN	
	LOCATION: PUP-NDC CAMPUS, STA. MESA, MANILA		CADD BY:	
			DATE:	

(02) 8713 5968 | dcoe_chair@gmail.com
RM322 CEA BLDG. NDC COMPOUND,
ANONAS COR. PUREZA STREETS, STA. MESA, MANILA





**POLYTECHNIC UNIVERSITY OF THE PHILIPPINES
COLLEGE OF ENGINEERING
COMPUTER ENGINEERING DEPARTMENT**



1
A-2 **SECOND FLOOR PLAN**
SCALE 1:300MTS

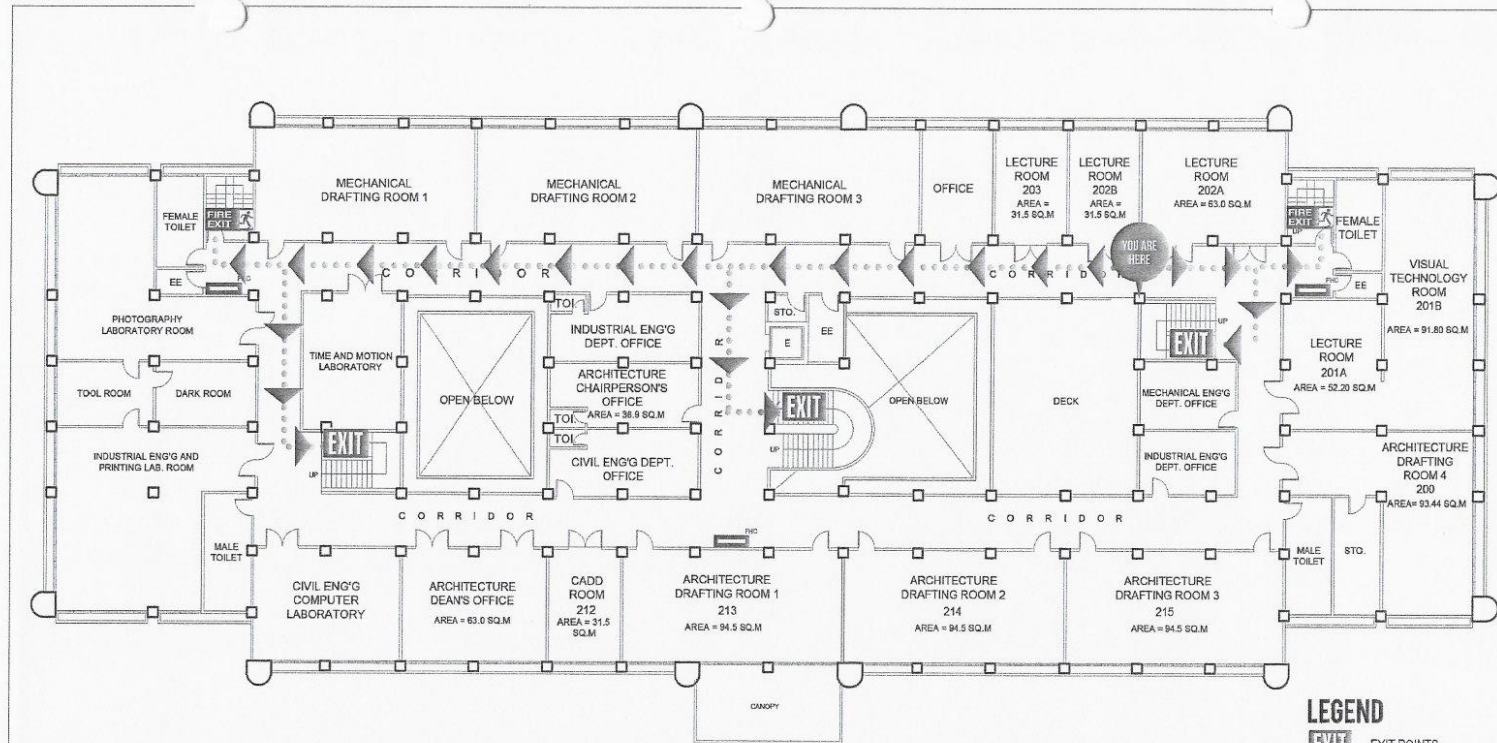
OWNER	PROJECT TITLE	PREPARED BY	SHEET CONTENTS	SHEET NO.
Republic of the Philippines POLYTECHNIC UNIVERSITY OF THE PHILIPPINES Sta. Mesa, Manila	COLLEGE OF ENGINEERING AND ARCHITECTURE BUILDING LOCATION: PUP-NDC CAMPUS, STA. MESA, MANILA	AR./ENR. <i>SHERWIN N. NIEVA</i> DIRECTOR PHYSICAL PLANNING AND DEVELOPMENT OFFICE	AS SHOWN CADD BY: DATE:	

(02) 8713 5968 | dcoe_chair@gmail.com
RM322 CEA BLDG. NDC COMPOUND,
ANONAS COR. PUREZA STREETS, STA. MESA, MANILA





**POLYTECHNIC UNIVERSITY OF THE PHILIPPINES
COLLEGE OF ENGINEERING
COMPUTER ENGINEERING DEPARTMENT**



1
A-2 **SECOND FLOOR PLAN**
SCALE 1:300MTS

LEGEND

- EXIT POINTS
- FIRE EXITS
- FIRE HOSE CABINET
- EXIT DIRECTION

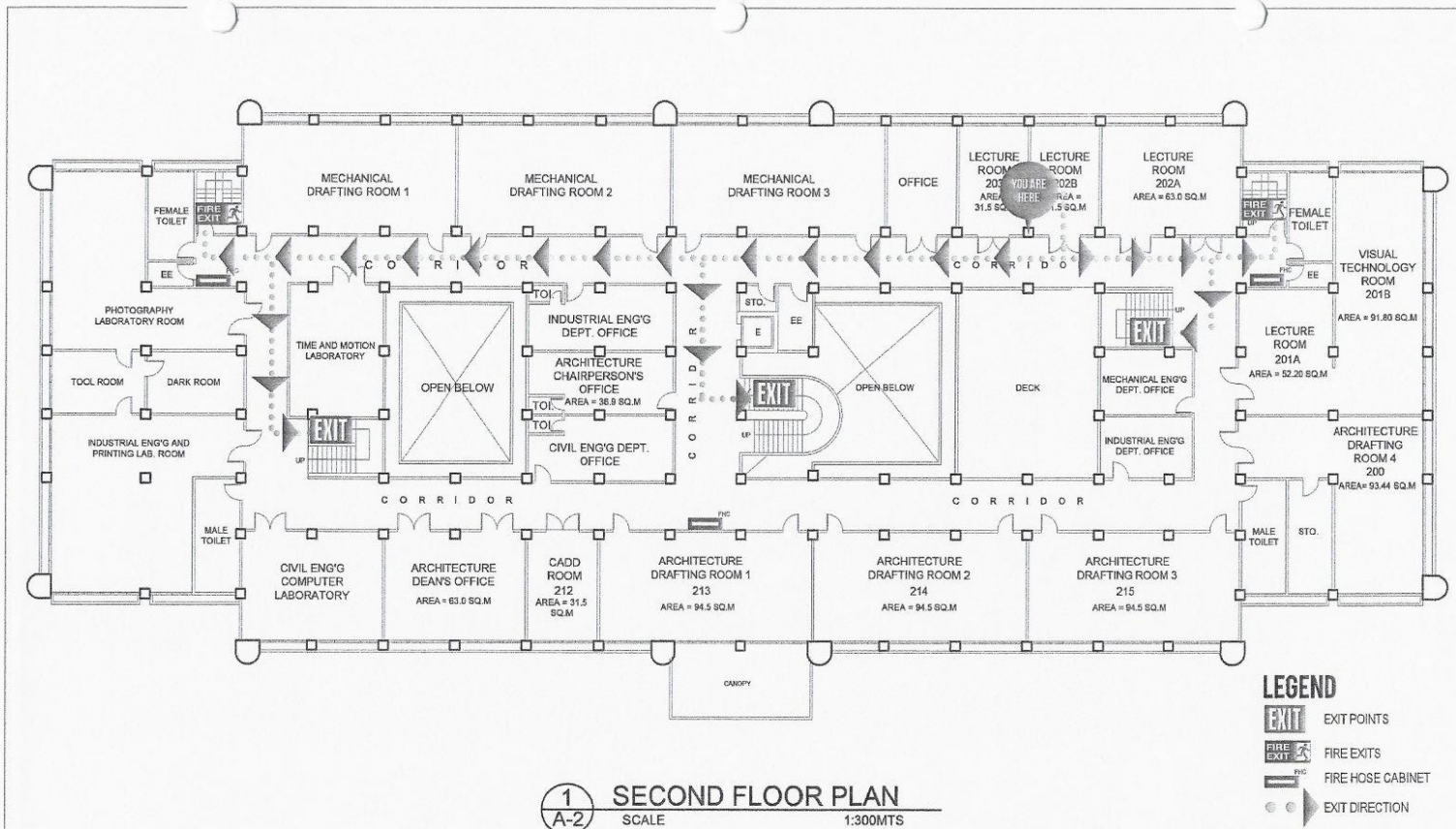
OWNER	PROJECT TITLE	PREPARED BY	SHEET CONTENTS	SHEET NO.
Republic of the Philippines POLYTECHNIC UNIVERSITY OF THE PHILIPPINES Sta. Mesa, Manila	COLLEGE OF ENGINEERING AND ARCHITECTURE BUILDING <small>LOCATION: PUP-NDC CAMPUS, STA. MESA, MANILA</small>	AR./ENP. <i>SHERWIN N. NIEVA</i> DIRECTOR PHYSICAL PLANNING AND DEVELOPMENT OFFICE	AS SHOWN CADD BY: DATE:	

(02) 8713 5968 | dcoe_chair@gmail.com
RM322 CEA BLDG. NDC COMPOUND,
ANONAS COR. PUREZA STREETS, STA. MESA, MANILA





**POLYTECHNIC UNIVERSITY OF THE PHILIPPINES
COLLEGE OF ENGINEERING
COMPUTER ENGINEERING DEPARTMENT**



1 SECOND FLOOR PLAN
A-2 SCALE 1:300MTS

LEGEND

- EXIT POINTS
- FIRE EXITS
- FIRE HOSE CABINET
- EXIT DIRECTION

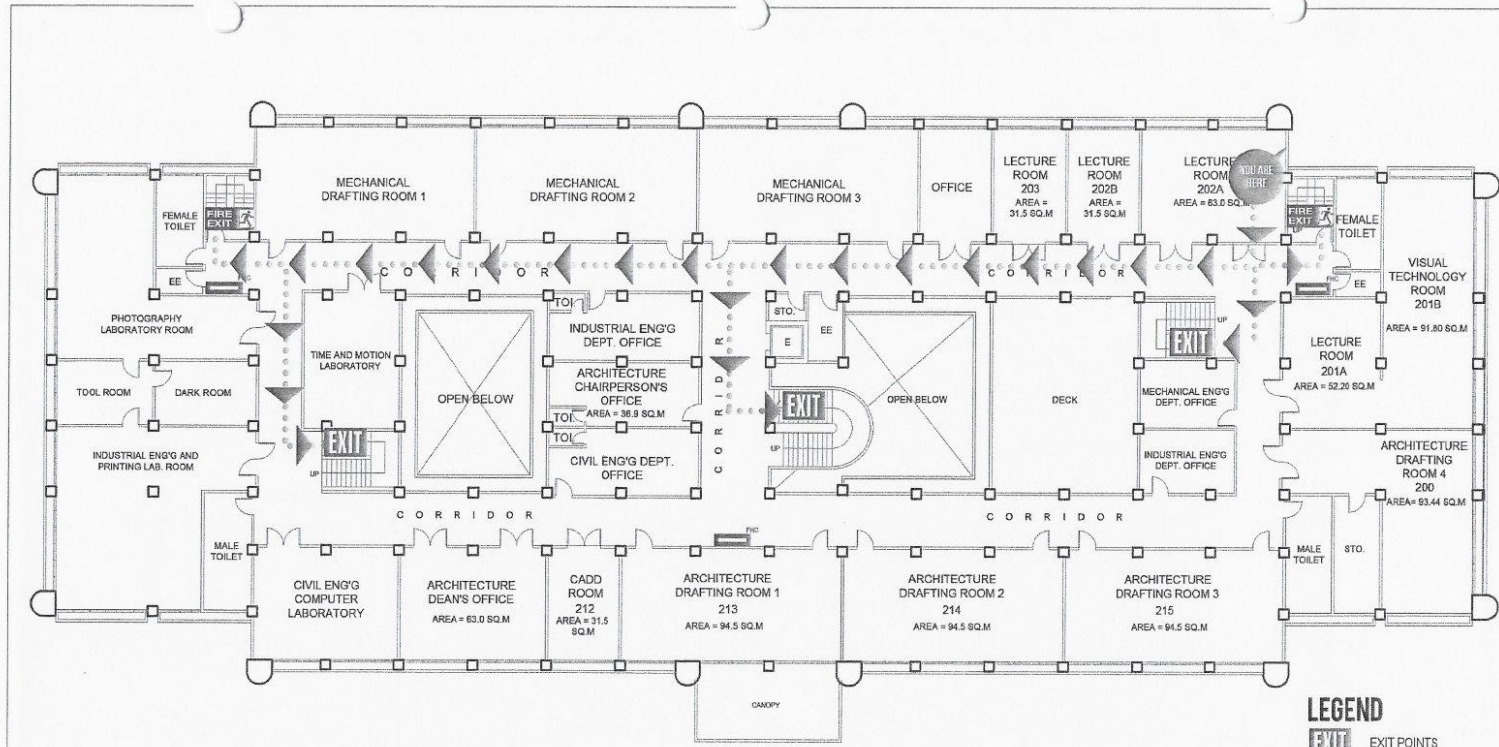
OWNER	PROJECT TITLE	PREPARED BY	SHEET CONTENTS	SHEET NO.
Republic of the Philippines POLYTECHNIC UNIVERSITY OF THE PHILIPPINES Sta. Mesa, Manila	COLLEGE OF ENGINEERING AND ARCHITECTURE BUILDING LOCATION: PUP-NDC CAMPUS, STA. MESA, MANILA	AR./ENR. SHERWIN N. NIEVA DIRECTOR PHYSICAL PLANNING AND DEVELOPMENT OFFICE	AS SHOWN CADD BY: DATE:	

(02) 8713 5968 | dcoe_chair@gmail.com
RM322 CEA BLDG. NDC COMPOUND,
ANONAS COR. PUREZA STREETS, STA. MESA, MANILA





**POLYTECHNIC UNIVERSITY OF THE PHILIPPINES
COLLEGE OF ENGINEERING
COMPUTER ENGINEERING DEPARTMENT**



1
A-2 **SECOND FLOOR PLAN**
SCALE 1:300MTS

LEGEND

- EXIT POINTS
- FIRE EXITS
- FIRE HOSE CABINET
- EXIT DIRECTION

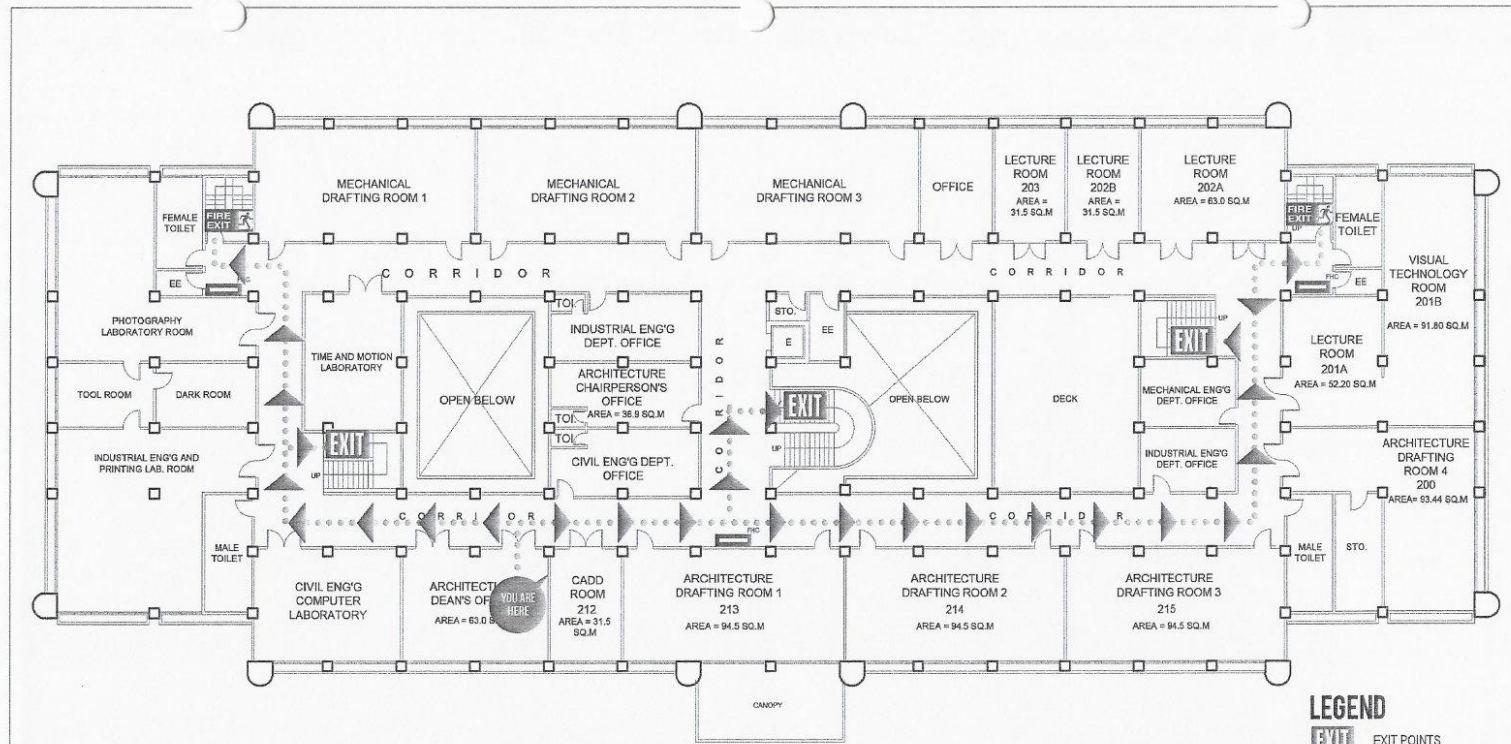
OWNER	PROJECT TITLE	PREPARED BY	SHEET CONTENTS	SHEET NO.
Republic of the Philippines POLYTECHNIC UNIVERSITY OF THE PHILIPPINES Sta. Mesa, Manila	COLLEGE OF ENGINEERING AND ARCHITECTURE BUILDING <small>LOCATION: PUP-NDC CAMPUS, STA. MESA, MANILA</small>	AR./ENR. <i>SHERWIN N. NIEVA</i> DIRECTOR PHYSICAL PLANNING AND DEVELOPMENT OFFICE	AS SHOWN CADD BY: DATE:	

(02) 8713 5968 | dcoe_chair@gmail.com
RM322 CEA BLDG. NDC COMPOUND,
ANONAS COR. PUREZA STREETS, STA. MESA, MANILA





**POLYTECHNIC UNIVERSITY OF THE PHILIPPINES
COLLEGE OF ENGINEERING
COMPUTER ENGINEERING DEPARTMENT**



1
A-2 **SECOND FLOOR PLAN**
SCALE 1:300MTS

LEGEND

- EXIT POINTS
- FIRE EXITS
- FIRE HOSE CABINET
- EXIT DIRECTION

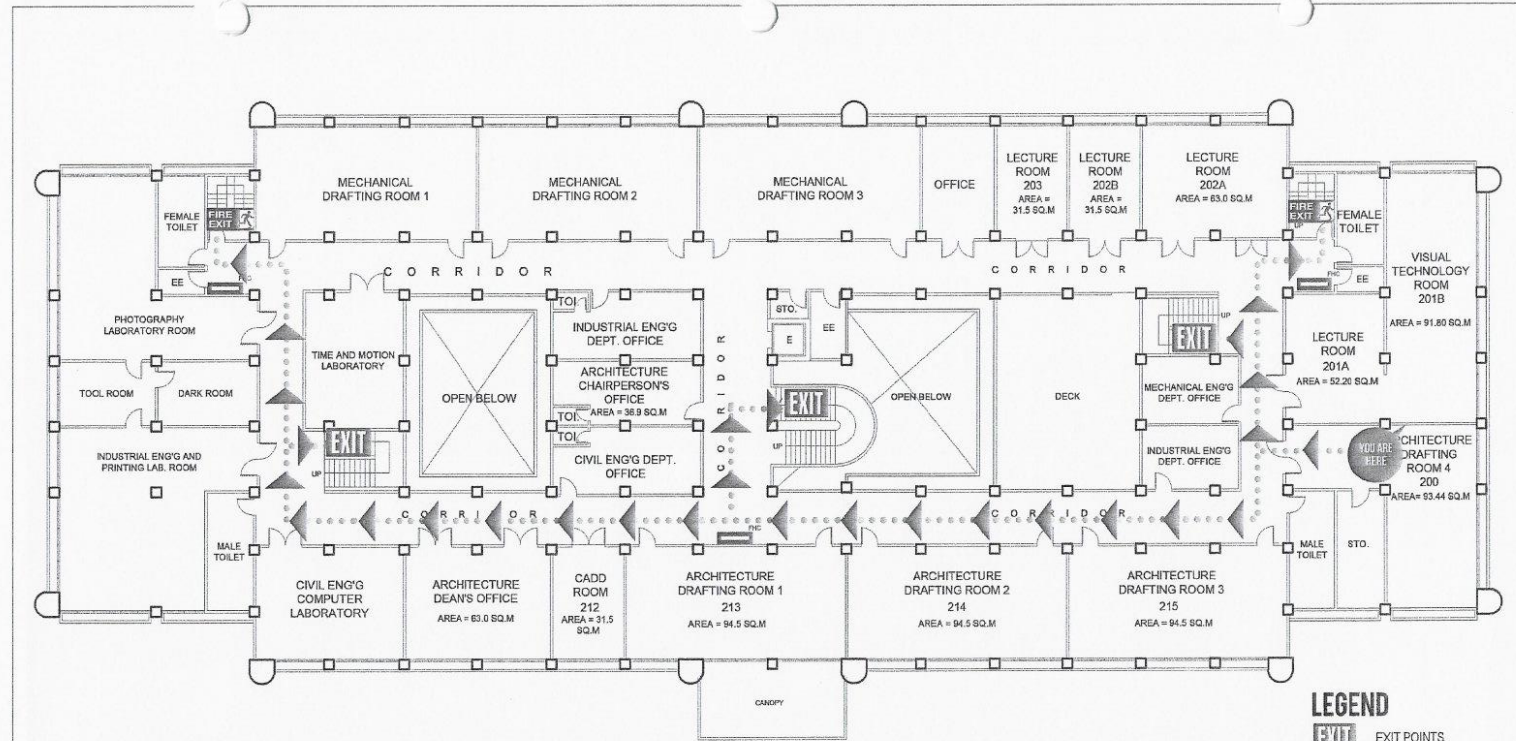
OWNER Republic of the Philippines POLYTECHNIC UNIVERSITY OF THE PHILIPPINES Sta. Mesa, Manila	PROJECT TITLE COLLEGE OF ENGINEERING AND ARCHITECTURE BUILDING LOCATION: PUP-NDC CAMPUS, STA. MESA, MANILA	PREPARED BY AR./EnP. SHERWIN N. NIEVA DIRECTOR PHYSICAL PLANNING AND DEVELOPMENT OFFICE	SHEET CONTENTS AS SHOWN CADD BY: DATE:	SHEET NO.
--	---	---	---	-----------

(02) 8713 5968 | dcoe_chair@gmail.com
 RM322 CEA BLDG. NDC COMPOUND,
 ANONAS COR. PUREZA STREETS, STA. MESA, MANILA





**POLYTECHNIC UNIVERSITY OF THE PHILIPPINES
COLLEGE OF ENGINEERING
COMPUTER ENGINEERING DEPARTMENT**



LEGEND

- EXIT POINTS
- FIRE EXITS
- FIRE HOSE CABINET
- EXIT DIRECTION

1
A-2 **SECOND FLOOR PLAN**
SCALE 1:300MTS

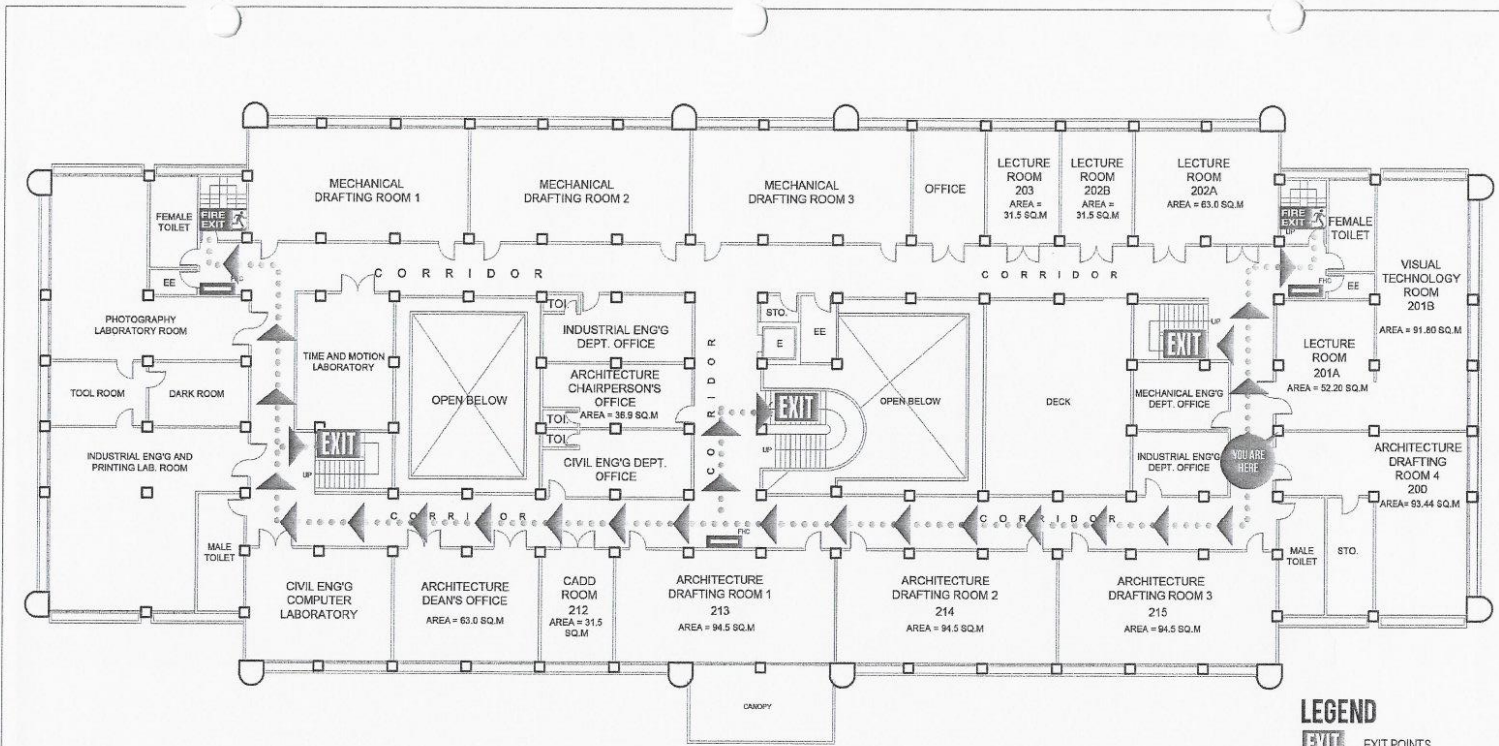
OWNER	PROJECT TITLE	PREPARED BY	SHEET CONTENTS	SHEET NO.
Republic of the Philippines POLYTECHNIC UNIVERSITY OF THE PHILIPPINES Sta. Mesa, Manila	COLLEGE OF ENGINEERING AND ARCHITECTURE BUILDING LOCATION: PUP-NDC CAMPUS, STA. MESA, MANILA	AR./ENR. SHERWIN N. NIEVA DIRECTOR PHYSICAL PLANNING AND DEVELOPMENT OFFICE	AS SHOWN CADD BY: DATE:	

(02) 8713 5968 | dcoe_chair@gmail.com
RM322 CEA BLDG. NDC COMPOUND,
ANONAS COR. PUREZA STREETS, STA. MESA, MANILA





**POLYTECHNIC UNIVERSITY OF THE PHILIPPINES
COLLEGE OF ENGINEERING
COMPUTER ENGINEERING DEPARTMENT**



LEGEND

- EXIT EXIT POINTS
- FIRE EXIT FIRE EXITS
- FIRE HOSE CABINET
- EXIT DIRECTION

1
A-2 **SECOND FLOOR PLAN**
SCALE 1:300MTS

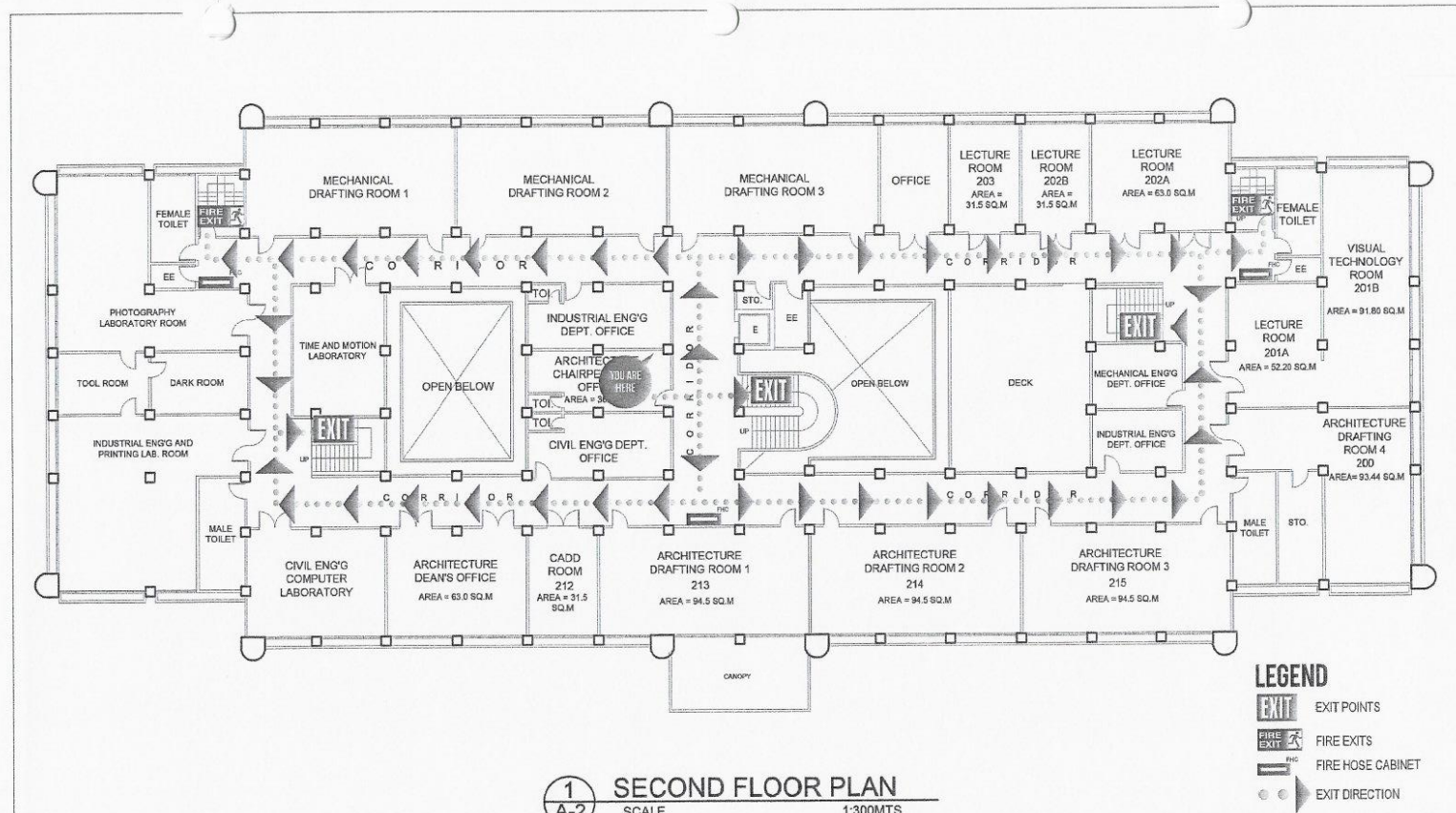
<p>OWNER Republic of the Philippines POLYTECHNIC UNIVERSITY OF THE PHILIPPINES Sta. Mesa, Manila</p>	<p>PROJECT TITLE COLLEGE OF ENGINEERING AND ARCHITECTURE BUILDING LOCATION: PUP-NDC CAMPUS, STA. MESA, MANILA</p>	<p>PREPARED BY AR./EnP. SHERWIN A. NIEVA DIRECTOR PHYSICAL PLANNING AND DEVELOPMENT OFFICE</p>	<p>SHEET CONTENTS AS SHOWN CADD BY: DATE:</p>	<p>SHEET NO.</p>
--	---	--	---	------------------

(02) 8713 5968 | dcoe_chair@gmail.com
RM322 CEA BLDG. NDC COMPOUND,
ANONAS COR. PUREZA STREETS, STA. MESA, MANILA





**POLYTECHNIC UNIVERSITY OF THE PHILIPPINES
COLLEGE OF ENGINEERING
COMPUTER ENGINEERING DEPARTMENT**



1 SECOND FLOOR PLAN
A-2 SCALE 1:300MTS

OWNER	PROJECT TITLE	PREPARED BY	SHEET CONTENTS	SHEET NO.
Republic of the Philippines POLYTECHNIC UNIVERSITY OF THE PHILIPPINES Sta. Mesa, Manila	COLLEGE OF ENGINEERING AND ARCHITECTURE BUILDING LOCATION: PUP-NDC CAMPUS, STA. MESA, MANILA	AR./ENP. SHERWIN N. NIEVA DIRECTOR PHYSICAL PLANNING AND DEVELOPMENT OFFICE	AS SHOWN CADD BY: DATE:	

(02) 8713 5968 | dcoe_chair@gmail.com
RM322 CEA BLDG. NDC COMPOUND,
ANONAS COR. PUREZA STREETS, STA. MESA, MANILA

